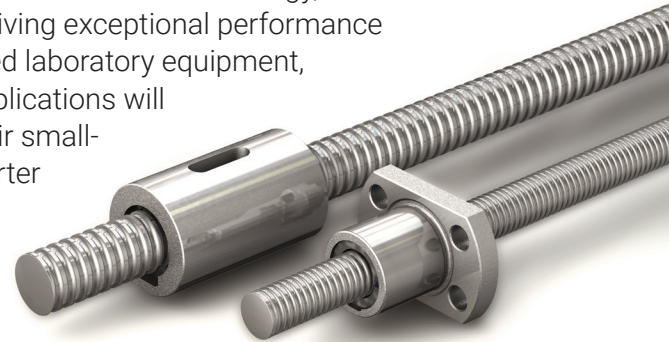


FOR IMMEDIATE RELEASE

PBC Linear expands its product selection with launch of Miniature Metric Ball Screw Assemblies

Roscoe, Illinois, USA – June 10, 2022 – PBC Linear, a Pacific Bearing Company and a global leader in linear motion solutions, has expanded its comprehensive portfolio to include Miniature Metric Ball Screw Assemblies. Building on the success of their lead screw technology, this combination of precision-rolled screw and compact nut is driving exceptional performance from an economical package. Manufacturers of sophisticated laboratory equipment, medical devices, semi-conductors, and other automation applications will find these high-precision ball screws a valued solution to their small-scale linear motion needs. In addition, PBC Linear offers shorter lead times, which is accomplished through their ball screw production process and central Midwestern location, where many of their products are engineered and produced.



PBC Linear miniature ball screws are made in the USA, eliminating the uncertainty of supply chain issues in Europe and Asia.*

Design and Options

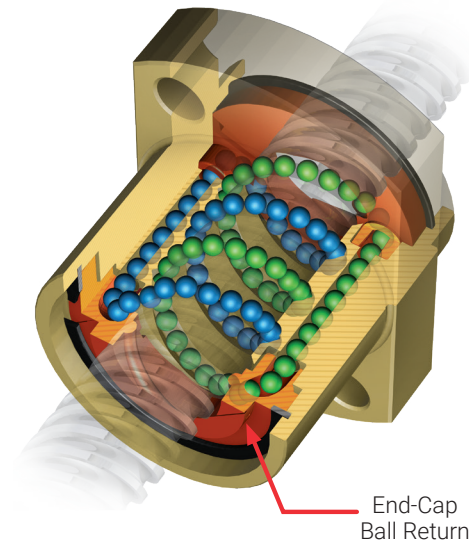
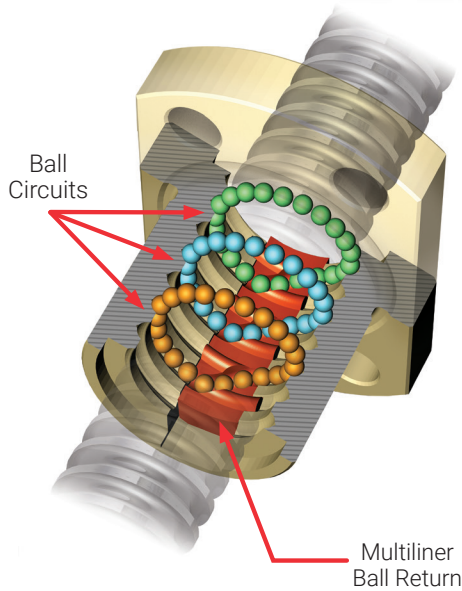
As with lead screws, ball screw assemblies are used to convert rotational motion to linear motion. They typically include a ball nut, threaded shaft, and a recirculating system that utilizes a continuous movement of balls to transfer forces and propel the nut along the screw. Each ball screw and nut are engineered with gothic arch threads that define the track of the nut and screw thread, offering high rigidity, durability, and duty cycles. The main benefit of ball screws is higher efficiency and accuracy, making them ideal for a variety of industrial and automotive applications.

PBC Linear currently offers miniature ball screws in diameter sizes of 6 mm, 8 mm, and 10 mm, with options for lead length and nut type. In addition, standard and special machined journals can be provided for unique customer requirements. Other options include fixed or floating end blocks.

The other half of the ball screw assembly consists of the nut. Miniature metric ball screw nuts from PBC Linear feature two types of ball return systems to accommodate shorter or longer leads. Short leads are synonymous with

| Size (Diameter x Lead) | Ball Return Type |
|------------------------|----------------------|
| 6 mm x 1 mm | Internal Multi-liner |
| 6 mm x 2 mm | Internal Multi-liner |
| * 6 mm x 6 mm | End-Cap Return |
| 8 mm x 1 mm | Internal Multi-liner |
| 8 mm x 2 mm | Internal Multi-liner |
| 8 mm x 2.5 mm | Internal Multi-liner |
| 8 mm x 5 mm | End-Cap Return |
| * 8 mm x 8 mm | End-Cap Return |
| 10 mm x 2 mm | Internal Multi-liner |
| * 10 mm x 10 mm | End-Cap Return |

* Currently In design and testing phase.



Internal return multiliner nuts are versatile and built to work with shorter leads and lighter loads. Their compact geometry and lighter weight offer a great option for space-saving applications requiring high precision linear motion.

End-cap return nuts route the flow of ball bearings from one end of the nut to the other. This design provides increased speed options because of its ability to accommodate longer leads, which is not practical in the multiliner nut design.

internal multiliner returns, and long leads are represented in our end-cap return system. Each are available in flanged or cylindrical configurations, with optional end support blocks and bearings. Flange style nuts can often be easier to remove and install in an assembly, provided the assembly can be designed so that the mounting screws or bolts can be easily accessed. Cylindrical nuts allow for a more compact assembly design as there is no flange.

Dynamic load ratings are an important factor when determining the correct miniature ball screw for an application. PBC Linear will provide conservative dynamic load rating values within this product family, based on 1,000,000 Rev (N). This ensures trusted, reliable performance for those looking to implement miniature ball screws into their systems.

Ball screws from PBC Linear come standard without preload (backlash clearance held to 0.05 mm MAX). We offer a preload option that offers higher rigidity and better positional accuracy, but at the expense of slightly diminished load capacity. This P-type preload uses oversized balls to preload the assembly up to 3% of dynamic capacity.

Standards and testing

PBC Linear ball screw assemblies meet the standard ISO accuracy for grades 7 and 5. To meet industry requirements, PBC Linear utilizes high-end testing equipment such as Keyence optical comparators, Mitutoyo thread form tracers, and custom dynamic lead checkers that analyze up to 15,000 points per meter.

PBC Linear uses a high-precision CNC roll threading process for the most consistent thread forms and high accuracy rate. They also measure and record 100% positional accuracy along the entire travel length of the screw.

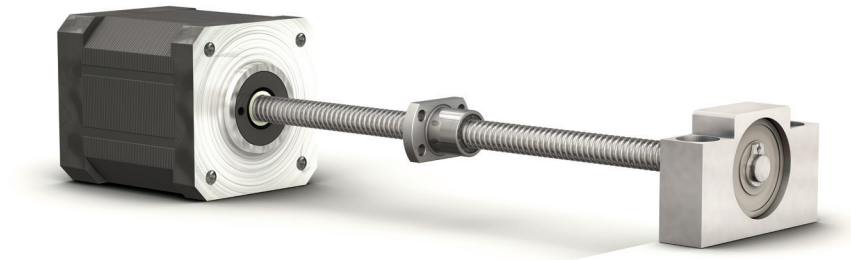
Find more information on Miniature Metric Ball Screw Assemblies from PBC Linear

Contact a PBC Linear sales representative to find information and receive the complete miniature ball screw and nut package that's out-of-the-box ready to be lubricated and integrated into your next OEM project.

For more in-depth information on miniature metric ball screws from PBC Linear:

View our blog, [Miniature Ball Screw Assemblies Expand Our Screw-Driven Portfolio](#)

View our product pages for [Miniature Metric Ball Screw Assemblies](#) and [Miniature Ball Screw Motor Series](#)



*Ball screws from PBC Linear are Made in the USA
using both domestic and foreign material sources.

About PBC Linear

PBC Linear has been a proud member of the Rockford area manufacturing community since 1983. The company has created and patented innovative linear motion solutions, and has greatly expanded its technology, expertise, and services to become a complete linear motion manufacturer. Through its partnerships in Europe and Asia and its worldwide network of distributors, PBC Linear has positioned itself as a trusted global leader in bearing products and linear motion technology.

Contact PBC Linear:

Marketing Department
marketing@pbclinear.com
Ph: +1.815.389.5600

Further PBC Linear Information:

Web: www.pbclinear.com/
Facebook: www.facebook.com/pbclinear/
Twitter: www.twitter.com/pbclinear
LinkedIn: www.linkedin.com/company/pbc-linear-a-pacific-bearing-company
YouTube: www.youtube.com/user/pbclinear