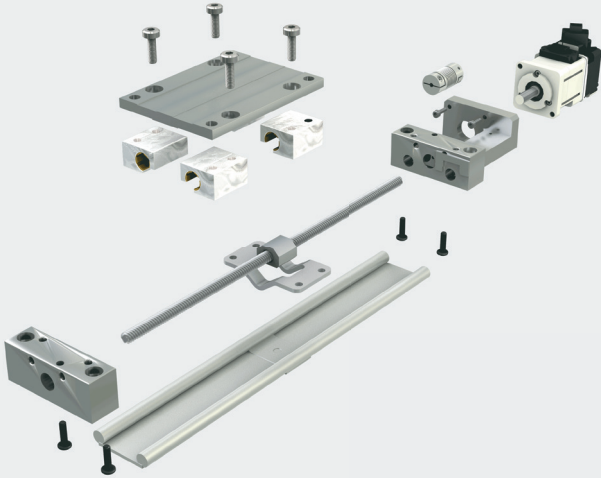
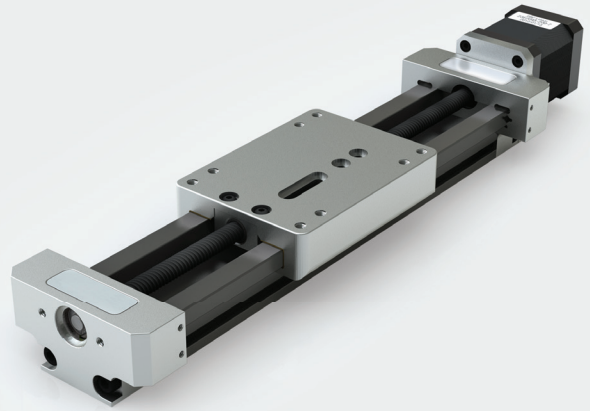


# Integrated Solution with **SIMO**

## Problem



## Solution



# 12

**Components  
Plus Fasteners**

**VS**

# 1

**Engineered  
Solution**

### Design Problems

- Unqualified, as-extruded rails bend, bow, and twist
- Plastic insert bearings
- Multiple components
- Complex assembly susceptible to binding
- High maintenance cost for re-assembly and alignment
- Limited to one bearing option

### Engineered Solution from PBC Linear

- Engineered polymer bearings = 2x loads, 3x life
- Pre-engineered alignment
  - SIMO® qualified rails eliminate bend, bow, and twist
  - Machined precision at extrusion prices
- Optimized system with integrated motor, lead screw, and Constant Force™ Technology nut = no tolerance stack up
- Platform of options = plain bearing, v-wheel, profile rail, lead screw, belt

Improve Life & Reliability • Enhance Performance • Reduce Part Count  
Lower Overall Costs • Reduce Risks • Streamline Assembly

Learn more about our solutions at [pbclinear.com](http://pbclinear.com) or call 1-800-962-8979  
6402 E. Rockton Road • Roscoe, IL 61073 USA

The data and specifications in this publication have been carefully compiled and are believed to be accurate and correct. However, it is the responsibility of the user to determine and ensure the suitability of PBC Linear® products for a specific application. PBC Linear® only obligation will be to repair or replace without charge, any defective components if returned promptly. No liability is assumed beyond such replacement. Specifications are subject to change without notice. LITGST-006 rev0423

 **PBC Linear**