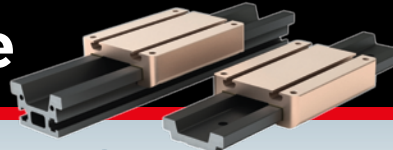
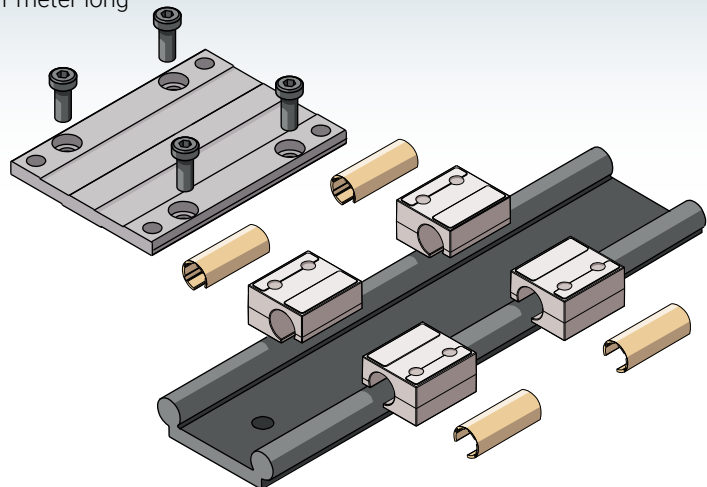


Advantages of Uni-Guide Low Profile



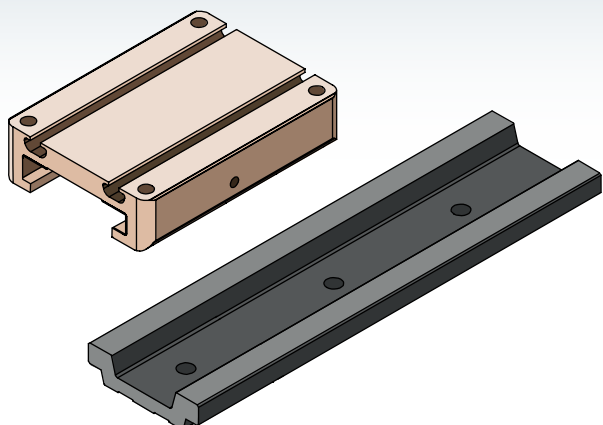
Double Rail Modular Guide

1 meter long



Uni-Guide Low Profile

1 meter long



14

Assembly Components

2

Assembly Components

Double Rail Modular Guide

1

Drill and tap holes in mounting surface to match the DFG rail.



2

Fasten DFG rail to surface.

3

Install and align 4 carriages to the rail.



4

Install carriage plate over carriages and fasten mounting screw while applying specified downward force to carriage.

5

Test for alignment and performance by moving carriage assembly over entire length looking for smooth motion and no binding.

6

If needed, loosen fasteners and adjust till motion is smooth.

6

Step Process

Uni-Guide Low Profile

1

Drill and tap holes in mounting surface to match the UGA rail.



2

Fasten UGA rail to surface.

DONE!



2

Step Process

RECEIPT

Labor - 1HR

TOTAL.....\$35

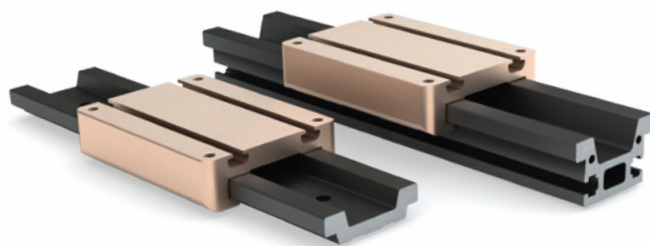
RECEIPT

Labor - ½HR

TOTAL.....\$ 17.⁵⁰

SAVE with Uni-Guide Low Profile linear slides!

Uni-Guide Low Profile is a smooth and quiet linear motion solution for compact spaces. The UGA's simple two piece design reduces parts, simplifies assembly, and provides quick integration over a component based system.



Product Information Available at pbclinear.com/Products/Gliding-Surface-Technology
For Technical and Application Information, Call 1-800-962-8979